



Technical Specifications

Updated – March 2022

Victoria Theatre and Calderdale MBC cannot be held responsible for any costs incurred due to information, assumptions or omissions from this document. It is the responsibility of the visiting company to check with the Technical Manager (James Holmes) for availability of equipment and critical dimensions.

Contents

Contacts.....	4
Seating Capacity	4
Stage and Auditorium Dimensions.....	5
Flying & Rigging	6
Overhead bars.....	6
On-stage Rigging Points.....	6
Front of Stage Rigging Points	6
Front of House Rigging Points:.....	6
Access Equipment.....	7
Access & Get In	7
Load In.....	7
Access Facilities for Users with Disabilities	7
Lighting	8
Desk	9
Dimmers.....	9
Lantern Stock	9
Follow Spots.....	9
Supplementary Power Supplies	9
Sound.....	11
Main House PA.....	11
Sound Desks	11
Tie-Lines.....	12
Playback	12
Communications	12
Supplementary Power.....	12
Projection	10
Masking	12
Staging	13
Backstage Facilities	14

Green Room Kitchen.....	14
Green Room	14
Dressing Rooms	14
Laundry & Wardrobe.....	15
How to find us	16
Parking.....	16
Appendix i – Hanging Plots – Blank / Standard Black Box.....	17
Appendix ii - Plans.....	19
Ground Plan	19
Crowd Control barrier Layout for Standing Concerts.....	21
Elevation.....	21
Appendix iii- Seating Layout	22
Stalls	22
Circle	23
Balcony.....	24

Contacts

Title	Name	Phone	Email
Theatres' Manger	Tim Fagan	01422 351156	Tim.fagan@calderdale.gov.uk
Deputy Theatres' Manager	Alison Metcalfe	01422 305942	Alison.metcalfe@calderdale.gov.uk
Technical Manager	James Holmes	01422 305947	James.holmes@calderdale.gov.uk
Stage Manager	Keilidh Whyte	01422 305944	Keilidh.whyte@calderdale.gov.uk
Chief Electrician	Darrell Adley	01422 305944	Darrell.adley@calderdale.gov.uk
Other Enquiries			VTEchnical@calderdale.gov.uk
Victoria Theatre Fountain Street Halifax HX1 1BP		Theatre Reception	01422 351156
		Box Office	01422 351158

Seating Capacity

Maximum Capacities:	Seated:	Standing:
	1512	1860
Stalls:	575	940
Dress Circle:	420	
Balcony:	517	

Please note that the stalls capacity will be reduced if any of the following are used:

- Orchestra Pit
- Steel Deck Extension(1200mm or 2400mm)
- Auditorium Treads
- Security Barrier
- Mixing Position / any other operating positions in stalls

Stage and Auditorium Dimensions

Proscenium Width	-	13710mm
Proscenium Height	-	8290mm
Depth of house border	-	3680mm
Stage Depth	-	9090mm
Rear of Safety Curtain to Back Wall	-	7600mm
Front of Safety Curtain to Stage Front	-	1300mm
Height of stage from stalls	-	1100mm
Stage to underside of fly bars	-	13410mm
Stage to underside of grid	-	14190mm
Width of grid	-	13410mm
Stalls floor level to auditorium ceiling	-	16620mm
Stage front to balcony front	-	14700mm
Back wall to front of choir seating	-	3400mm
Front of choir seats to rear of organ trap	-	1930mm
Front of choir seats to front of organ trap	-	3940mm

Please note that the Stage Right scene dock is 7620mm high, however the Stage Left wing has a total height clearance of 2286mm.

A rear of stage crossover is available through dressing room 2, there is no permanent cross-over on stage.

A 1:25 scaled stage plan and elevation is available on request from the [Technical Team](#).

Please note the Orchestra Pit is situated on the stalls floor, in front of the stage, with a pit rail. This will result in the removal of rows of seating.

Please contact the [Technical Team](#) with your requirements.

Flying & Rigging

Overhead bars

33 no. Double Purchase Counterweight System.

All bars have a width of 12190mm

All bars have a uniformly distributed safe working load of 300kgs. The fly bars are not standard scaff and have an outside diameter of 58mm.

Clamps to under sling standard scaff are available however this must be discussed with the Technical Team prior to arrival.

Please see appendix ii for a blank hanging plot detailing specific bars and distances from Safety Curtain and a hanging plot detailing our standard black box.

On-stage Rigging Points

These can be achieved from 3 x RSJ's supporting the grid, running upstage to downstage from the back wall to the safety curtain.

The RSJ's are located running CS and 4877mm either side of centre.

Front of Stage Rigging Points

	Distance from centre line	Distance to inside of Proscenium	Distance from front of stage	Distance from front of top part of safety curtain
Stage Left Point	4.8 meters	2.06 meters	0.37 meters	0.75 meters
Stage Right Point	4.7 meters	2.15 meters	0.44 meters	0.7 meters

Proscenium Booms

We have 2 vertical box truss booms. 1 either side of the proscenium. House PA is rigged on these trusses. For rigging purposes, harnesses must be worn to gain access via fixed vertical ladders. Any rigging must be discussed in advance with the [Technical Team](#).

Front of House Rigging Points:

Front of house points are 4877mm either side of stage centre and are set off 3900mm from the edge of the stage.

The SWL on each point is 750kg.

There is a 12m span advance truss rigged on these points on Lodestar chain hoists and safety steels which are provided.

Any use of these points must be agreed in advance including all loadings with the [Technical Team](#).

Access Equipment

- Genie GR20 powered access MEWP (To be used by IPAF qualified operators only, in agreement with the Technical Team)
- 1 large and 2 medium A-frame Zarges.

Access & Get In

Load In

- 1) **Powell Street get-in.** Access to stage is via a scissor lift (SWL 5 Tonnes) from street level. Powell Street is 2133mm above the stage right dock. Practical width of dock door is 1590mm wide x 3000mm high.
- 2) **Stalls Entrance Doors** on Commercial Street. This is the easiest level access for equipment needing to be Front of House, vehicles can park in a loading bay on Commercial Street.

Access Facilities for Users with Disabilities

Front of House

A wheelchair lift is available from the foyer into the Stalls.

Level access is provided from the Stalls Entrance for wheelchair users.

We are nominally licensed to allow up to 6 wheelchair users into any performance at stalls level (subject to management approval and discussion this may be increased or decreased)

Stage

Access to stage can be achieved by a full width stage ramp, constructed from stage decking and securely attached to the front of stage. This must be agreed in advance of your event.

For more information please contact the [Technical Team](#).

Toilets

Two disabled toilets are situated in the Stalls Level corridor.

Lighting

Desk

ETC Eos 8000 channel (2048 Licensed)

Dimmers

156 x 2.5Kw (ADB Eurorack)

6 x 5Kw

Lantern Stock

Please note that this list is subject to change. Please contact the [Technical Team](#) prior to your arrival to confirm stock availability.

Fixture	Count	Fixture	Count
Strand SL 18/32	6	Cantata PC	10
Source 4 19 deg	16	Cantata Fresnel	25
Source 4 26 deg	4	Source 4 Fresnel	12
Source 4 36 deg	3	Par 64	85
Source 4 14 deg	4	Par 64 short nose	10
Source 4 Zoom 15/30	6	Iris 1's	12
Source 4jr Zoom 25/50	10	Coda 1's	6

Follow Spots

2 x 1.2Kw Robert Juliat MSR follow spots

2 x 16A CEE Form sockets are available for touring follow spots.

Supplementary Power Supplies

Located Stage Left

- 200A 3 Phase Powerlock
- 125A 3 Phase CEE Form

- 125A Single Phase CEE Form
- 63A 3 Phase CEE Form
- 63A Single Phase CEE Form
- 32A Single Phase CEE Form

Located Stage Right Fly Floor

- 2 x 32A 3 Phase CEE Form

Located Down Stage Right

- 32A 3 Phase CEE Form – motor power

Projection

- Barco CLM R10+ 10k Lumens
Lens: 0.8 fixed
Lens: 1.5 - 2.2 short throw
- Zoom Fast fold screen 4m x 3m (Front & Rear Projection)

Additional Equipment

Please note that this additional equipment is available to hire from the venue. Please contact the Technical Manager for details of costs and availability.

Lighting

- 8 x Chauvet Maverick MK1 Hybrid moving lights
- 12 x Chauvet Rouge R2 Wash moving lights
- 2 x Unique 2 haze machines
- 2 x Viper NT Smoke machines
- 6 x Showtec Compact Tri 7
- RGB LED Starcloth 7m drop x 12 m width

Sound

Main House PA

Nexo GEO PA comprising:

- 26 no Nexo Geo M620 array module (centre cluster of 8, 6 arrays of 3, prosc mounted)
- 4no Nexo LS18 Sub
- 4no Nexo ID24
- 3no Nexo 4x1 Amplifiers
- 1no Nexo 4x4 Amplifier
- 8 no Active DAD Monitors

Sound Desks

- Allen and Heath DLive S5000 with DM48 MixRack
- Allen & Heath QU16
- Allen and Heath ZED 436
- Soundcraft EPM 12

Additional Equipment

Please note that this additional equipment is available to hire from the venue. Please contact the Technical Manager for details of costs and availability.

- 1 x Mac Mini running QLab Pro 3 with 8 channel Focusrite Soundcard
- 12 x Sennhieser G3 100 Radio Mic systems (GB)
 - 12 x Bodypacks
 - 3 x Handhelds (Shared recievers)
- Various microphones
- Steinway Model D Grand Piano (Black)
- 6 x Yamaha MSR400 Active monitors

Tie-Lines

- Permanent tie lines from DSL and DSR to rear of auditorium at control position
- Ethernet tie lines available from rear of auditorium to DSL and DSR

Playback

- Q Lab (Contact [Technical Team](#))

Communications

- Tec-Pro communications system from Prompt Corner
- 7 Headsets and belt packs
- ASL cue light system – Master station and 10 outstations
- Show relay to all dressing rooms and backstage areas inclusive of paging system

Supplementary Power for Sound

Located Prompt Corner

- 63A Single Phase CEE Form
- 32A Single Phase CEE Form
- 16A Single Phase CEE Form x 2
- 13A Sockets x 8

Located Dimmer Room (Above Stage Left)

- 63A 3 Phase CEE Form
- 63A Single Phase CEE Form

Located Rear of Stalls

- 13A Single Phase

Masking

- Full soft black box
 - 7 pairs serge legs, 5 borders, pair full black tabs
- White Cyclorama
- White Sharkstooth gauze

Staging

A thrust stage of either 2440mm or 1220mm is available on request. Please note there will be a charge for this facility.

Seating will be removed for any event using a thrust, please contact the [Technical Team](#) for information.

Auditorium treads (x2) are available on request, these can be placed DSL, CS or DSR.

Stage Equipment

- 8 x 3m Lifec Quad Truss

Decks

- 8 x 4 Lite Deck 7
- 8 x 4 Steeldeck 4
- 8 x 4 Aluminium deck 6
- 8 x 2 Steeldeck 2
- 4x5 Steel Deck 1
- 2x4 Steel Deck 2
- Triangle Steel Deck 4

Decking Leg Heights

Steeldeck legs 1ft x 35

Steeldeck legs 18in' x 22

Steeldeck legs 2ft x 23

Steeldeck legs 2ft 18in x 41

Steeldeck legs 3ft x 35

Steeldeck legs 3ft 7in" (stage height) x 37

Dance Floor

4 x rolls 2 x15 meter reversible dance floor (black/grey)

Backstage Facilities

Please note that the backstage kitchen and green room areas are located on the first floor. There is no lift access to the first floor and access is limited to a standard door width.

Green Room Kitchen

- Room size 6m x 4.5m
- 2 x Sinks
- 1 x Commercial Electric Oven
- 1 x Bain Marie with 8 compartments
- 1 x Microwave
- 1 x Kettle
- Large Fridge
- Large Freezer
- 1 x 32A 3ph supplies
- 2 x 16A Single Phase

Green Room

- Room size 5m x 5m
- Tables and chairs are available on request

Dressing Rooms

The theatre has 8 dressing rooms spread over 3 floors. Dressing Room 1 has en-suite facilities and there are additional showers and toilets on other levels.

Please contact the [Technical Team](#) to check availability.

Please note that the Victoria Theatre has a fully automated fire detection and alarm system with smoke and heat detectors in all backstage corridors and dressing rooms.

Smoking is prohibited in all areas of the theatre, cooking is allowed in designated areas only!

WiFi is widely available around the theatre & backstage.

Dressing Room	Approximate total floor area m ²	Occupancy at 2.00 m ² per person	Occupancy at 1.50 m ² per person	Occupancy at 1.00 m ² per person
1	17.5	8	11	17
2	17	8	11	17
3	13.5	6	9	13
4	23.5	11	15	23
5	5	2	3	5
6	10	5	7	10
7	10	5	7	10
8	13.5	6	9	13
Green Room	22.5	11	15	22
Total occupants		62	86	132

Laundry & Wardrobe

A laundry and drying room is available with:

- 2 x Washing machines
- 2 x Dryers
- Irons and Ironing Boards

Please note these facilities are used by The Victoria Theatre staff as well as being available for visiting companies.

How to find us

Parking

Parking in Halifax is largely pay and display and short stay. If you require parking facilities for loading and unloading please speak to a member of the technical team at least 7 days in advance of your visit.

- 1) All personal vehicles must use local car parks between office hours. Between 1800 and 0800 parking is free on surrounding streets.
- 2) All trucks can normally park on Powell Street if parking has been prearranged. On some occasions vehicles may need to be moved to a nearby car park after unloading. This car park is 2 minutes drive (5 mins walk) from the theatre.
- 3) Sleeper coaches can park on Powell Street or Commercial Street if pre-arranged, as long as they park outside the theatre. The theatre cannot accept liability for fines or tickets received if coaches are parked anywhere else on Powell Street.
- 4) All parking on Powell Street is free on Sundays.

If you require any other information please contact the [Technical Team](#).



Appendix i – Hanging Plots – Blank / Standard Black Box

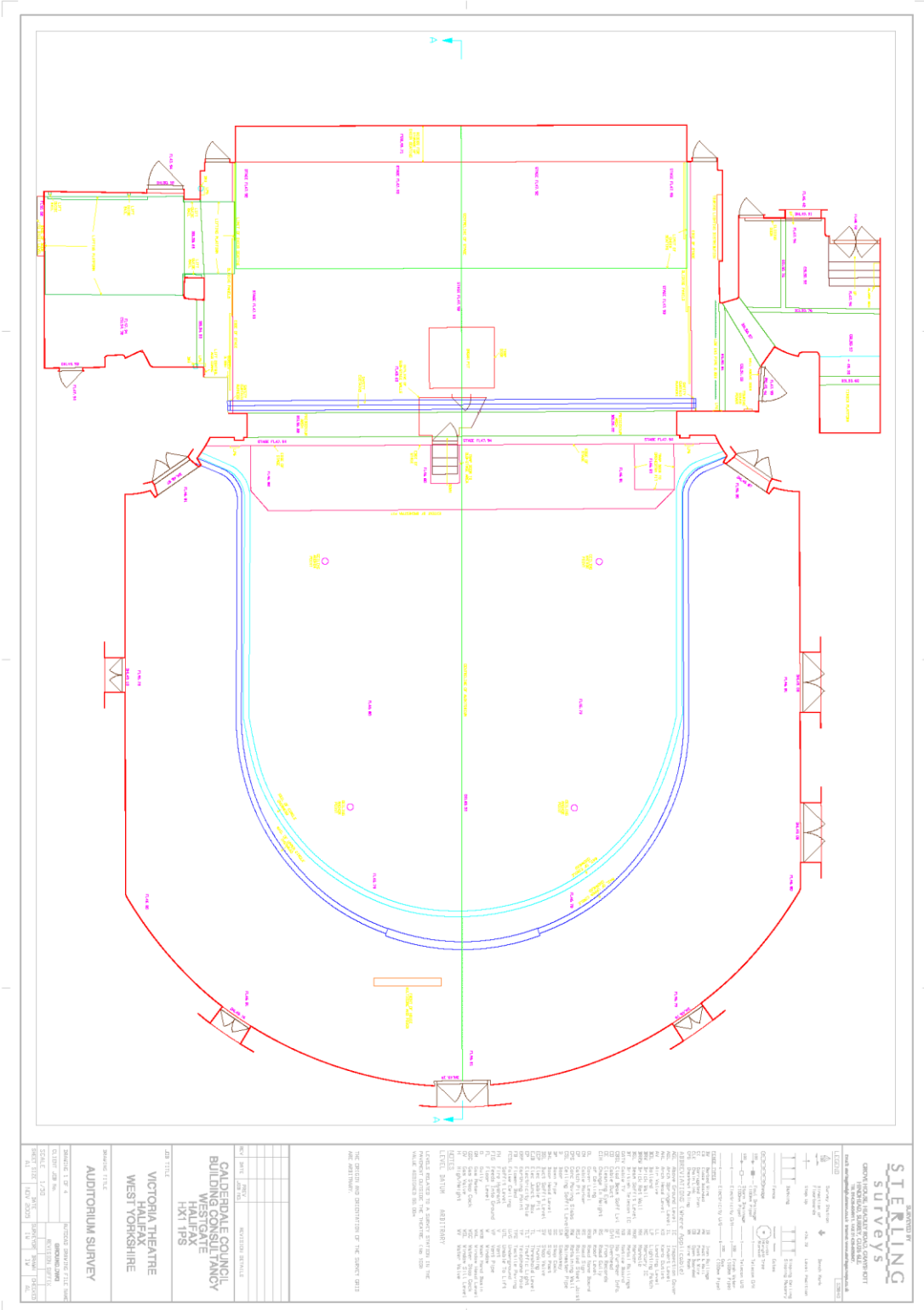
Bar	Distance from Iron (m)	Notes
1	0.25	
2	0.39	
3	0.54	
4	0.85	
5	1.31	
6	1.61	
7	1.92	
8	2.07	
9	2.3	
10	2.44	
11	2.6	
12	2.75	
13	2.91	
14	3.36	
15	3.52	
16	3.66	
17	3.82	
18	3.98	
19	4.13	
20	4.51	
21	4.66	
22	4.97	
23	5.58	
24	5.72	
25	5.88	
26	6.03	
27	6.18	
28	6.56	
29	6.72	
30	6.86	
21	7.02	
32	7.18	
33	7.33	
--	7.60	Back Wall
Bar	Distance from Iron (m)	Notes

1	0.25	House Header (Red Velvet)
2	0.39	House Tabs (Red Velvet, tied and flown)
3	0.54	Soft Black Legs
4	0.85	LX 1
5	1.31	Soft Black Legs
6	1.61	
7	1.92	Soft Black Border
8	2.07	Soft Black Border
9	2.3	Soft Black Legs
10	2.44	LX 2
11	2.6	
12	2.75	
13	2.91	
14	3.36	Soft Black Border
15	3.52	Soft Black Legs
16	3.66	
17	3.82	
18	3.98	
19	4.13	LX3
20	4.51	
21	4.66	Soft Black Legs
22	4.97	
23	5.58	Soft Black Border
24	5.72	Soft Black Legs
25	5.88	LX4
26	6.03	
27	6.18	LX4a
28	6.56	Soft Black Border
29	6.72	Soft Black Legs
30	6.86	LX5
21	7.02	
32	7.18	Full Blacks
33	7.33	CYC
--	7.60	Back Wall

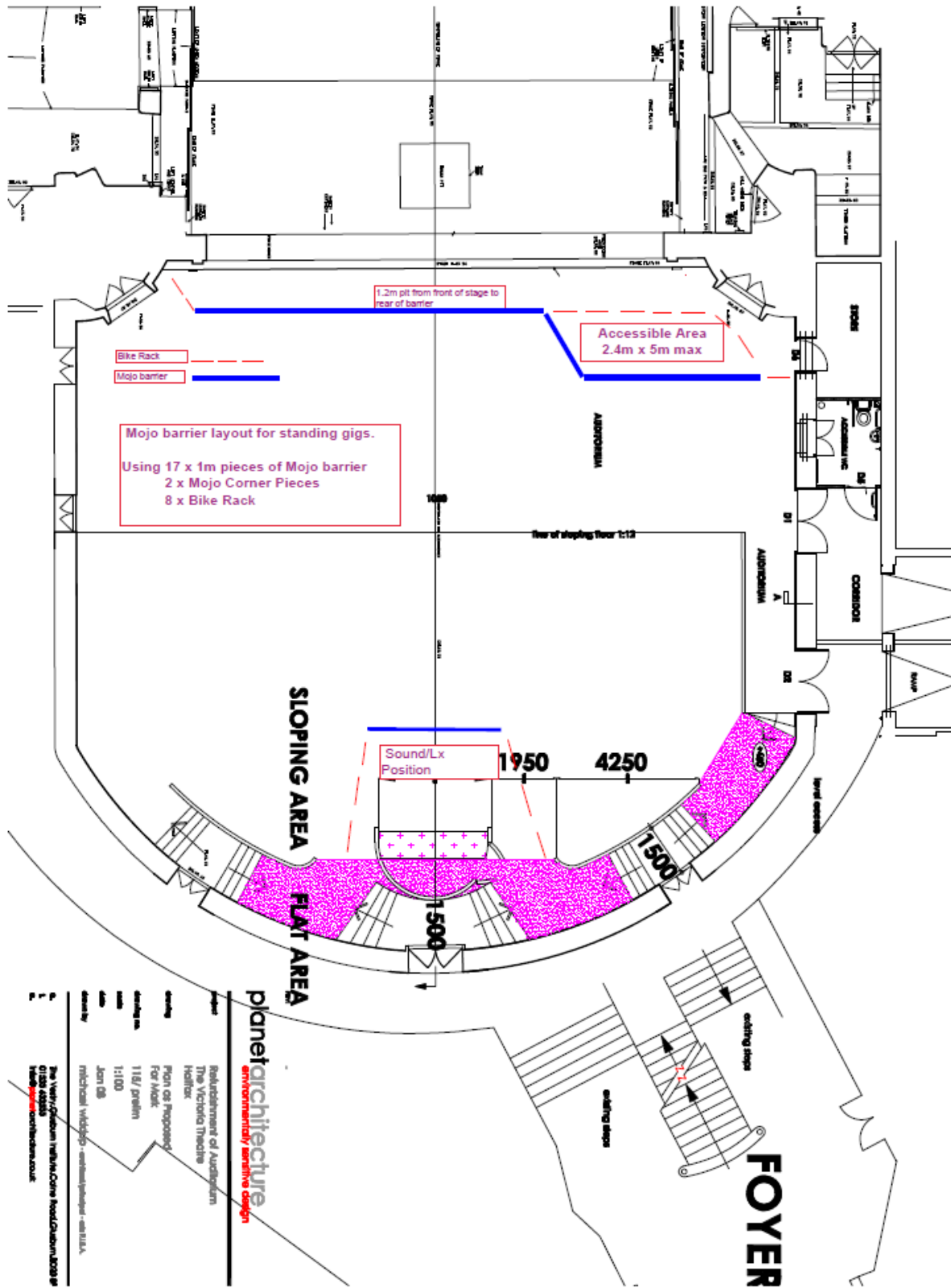
Appendix ii - Plans

Ground Plan

Do not scale.

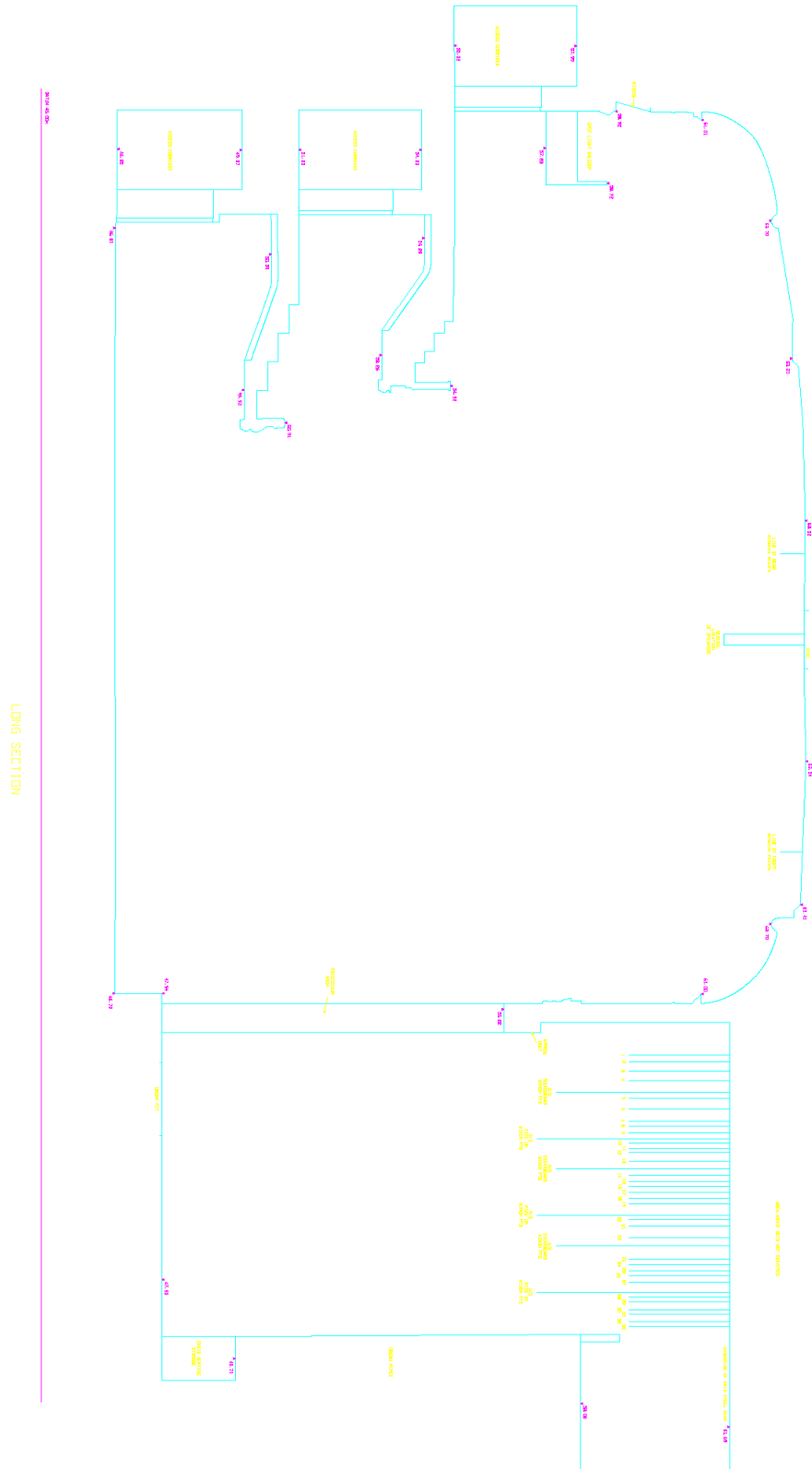


Crowd Control Barrier Layout for Standing Concerts (including Accessible area)



Elevation

Do not scale

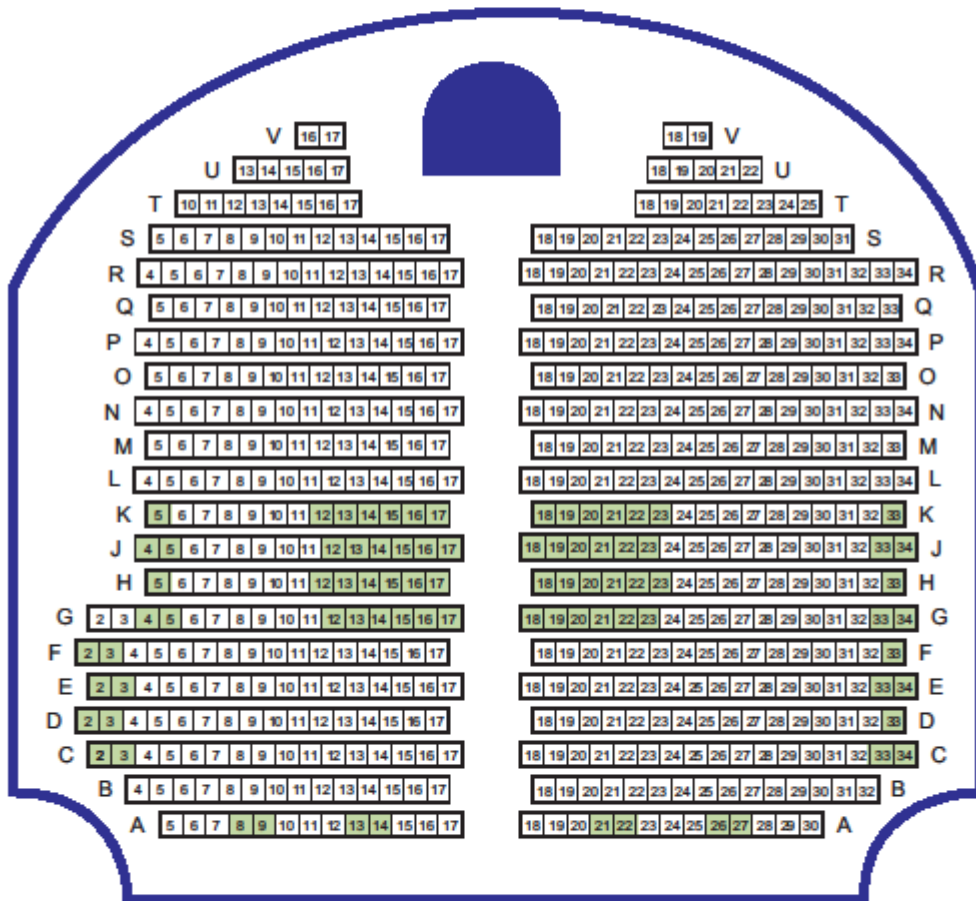


Appendix iii- Seating Layout

Stalls



Stalls Seating Plan



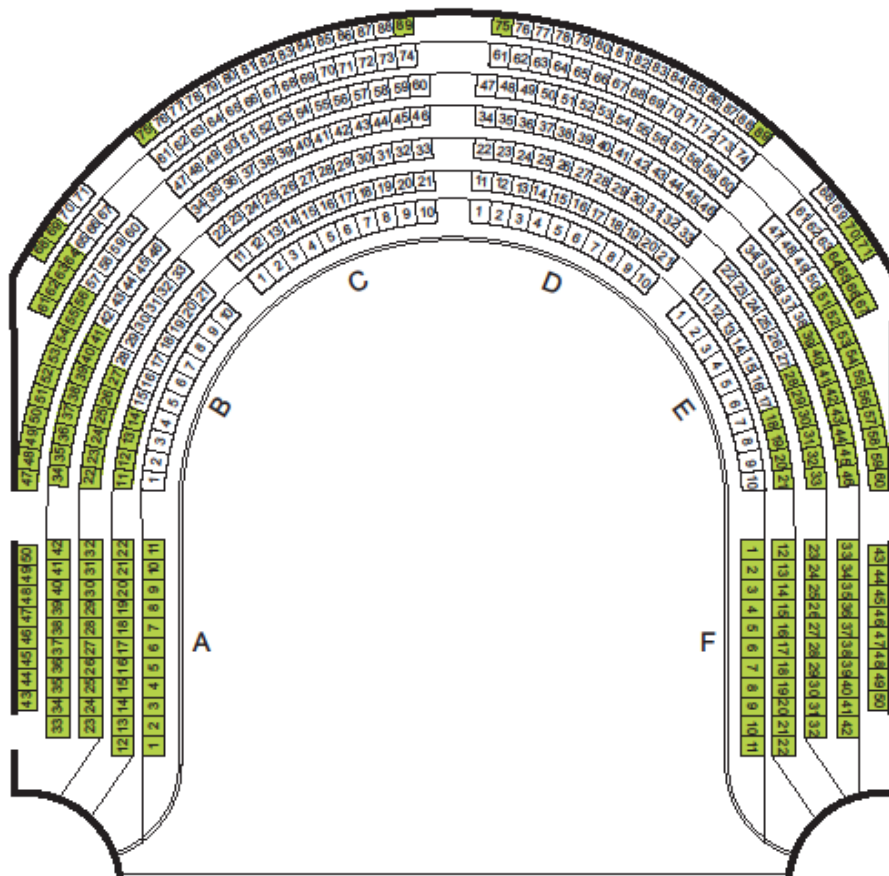
■ Wheelchair Access

16/07/2008

Circle

THE VICTORIA

THEATRE HALIFAX



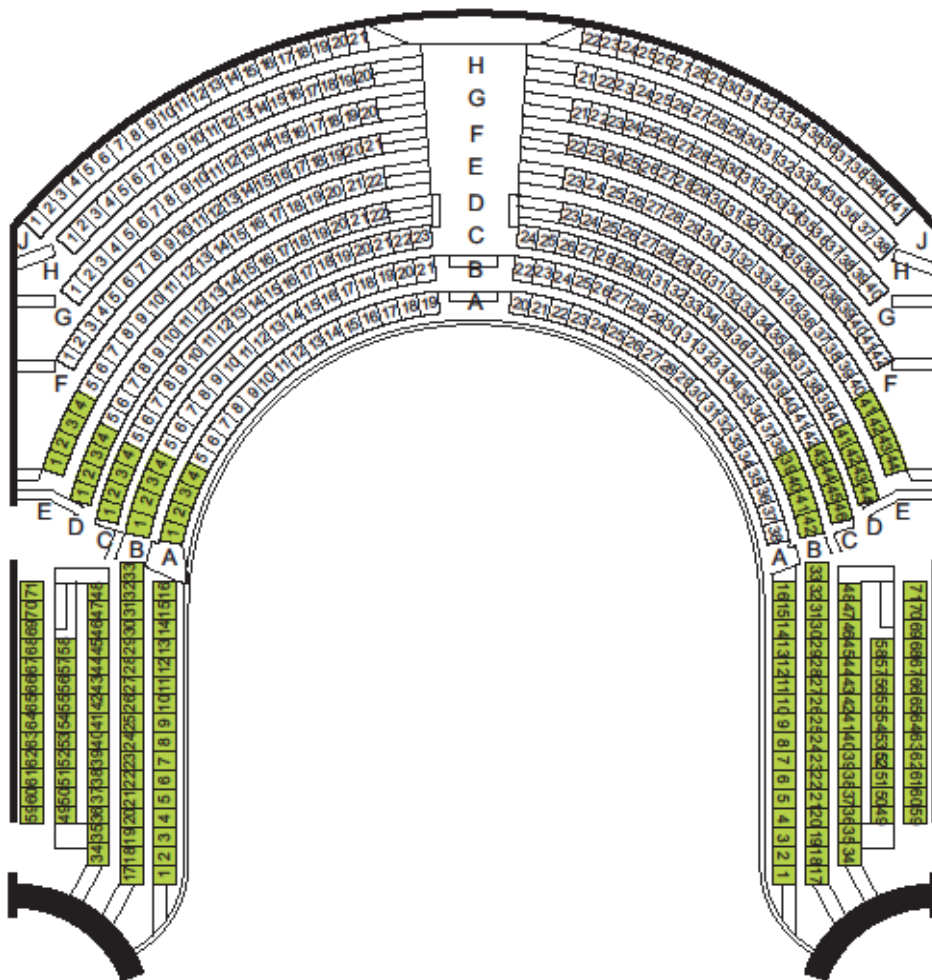
KEY:
Restricted View

CIRCLE

Balcony

THE VICTORIA

THEATRE HALIFAX



KEY:
 Restricted View

BALCONY